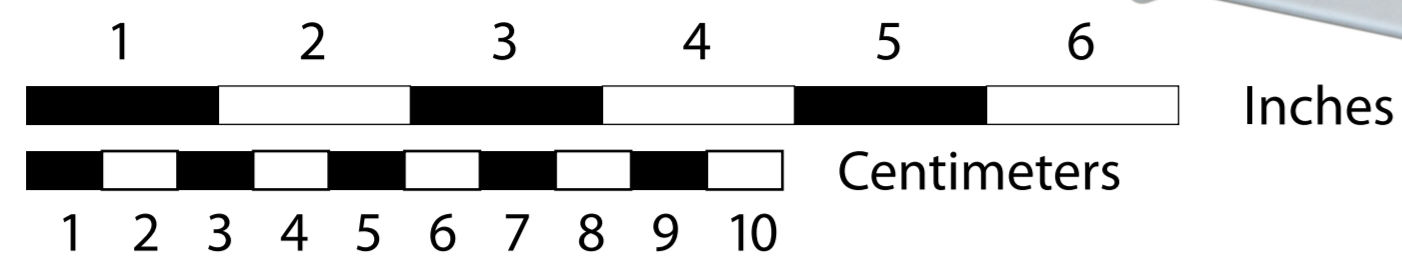


# FT 3D



black = cut

red = score 50%

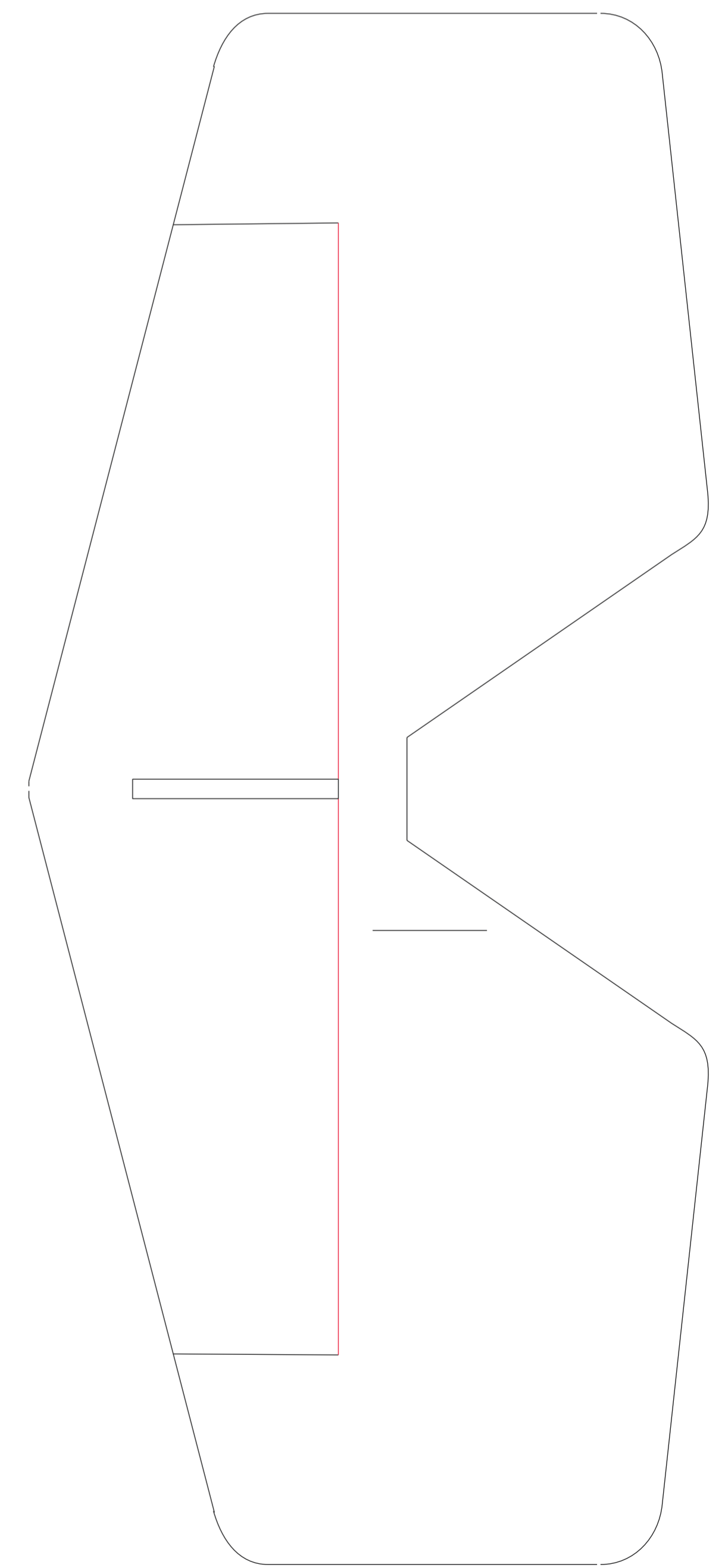
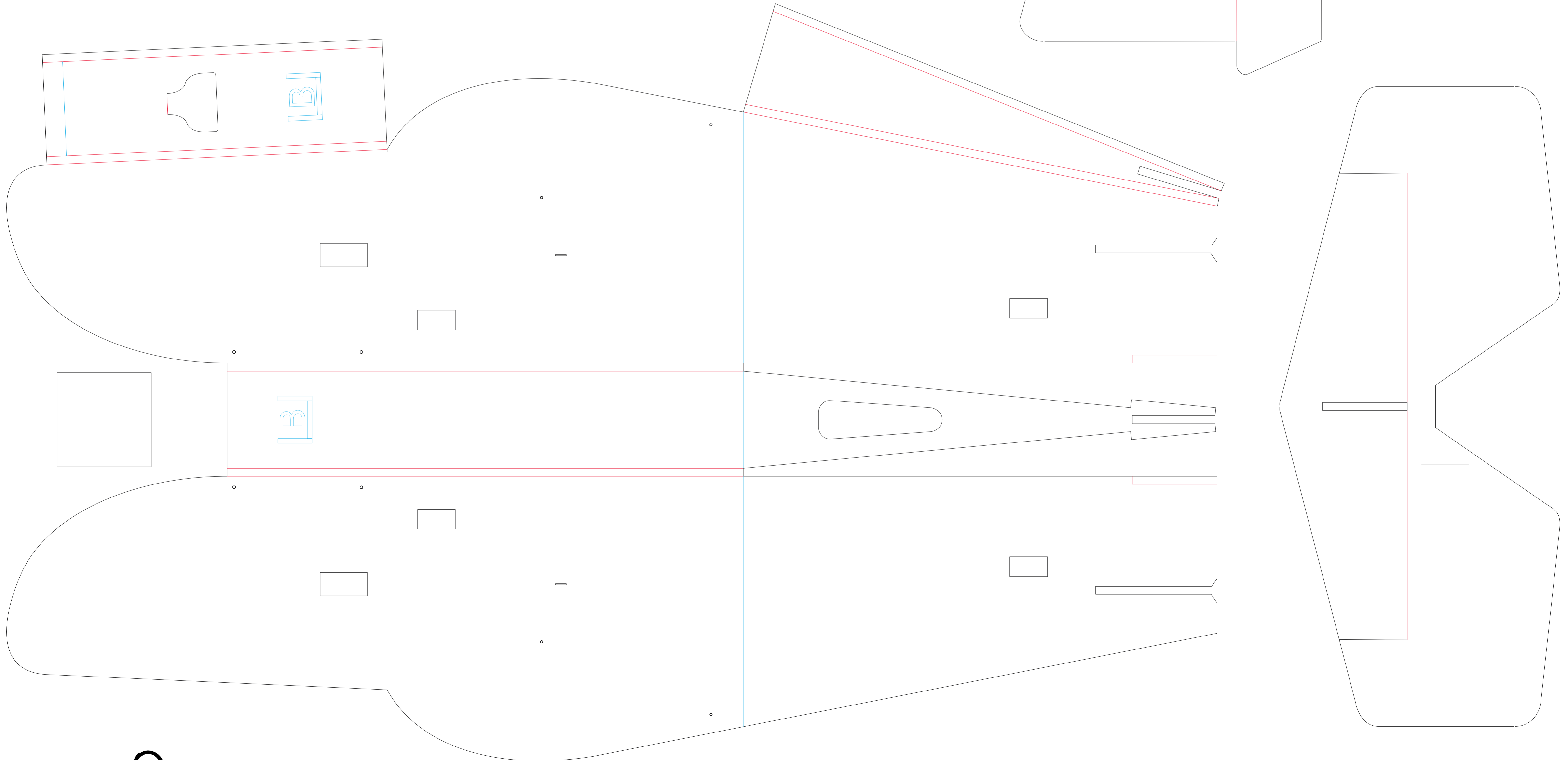
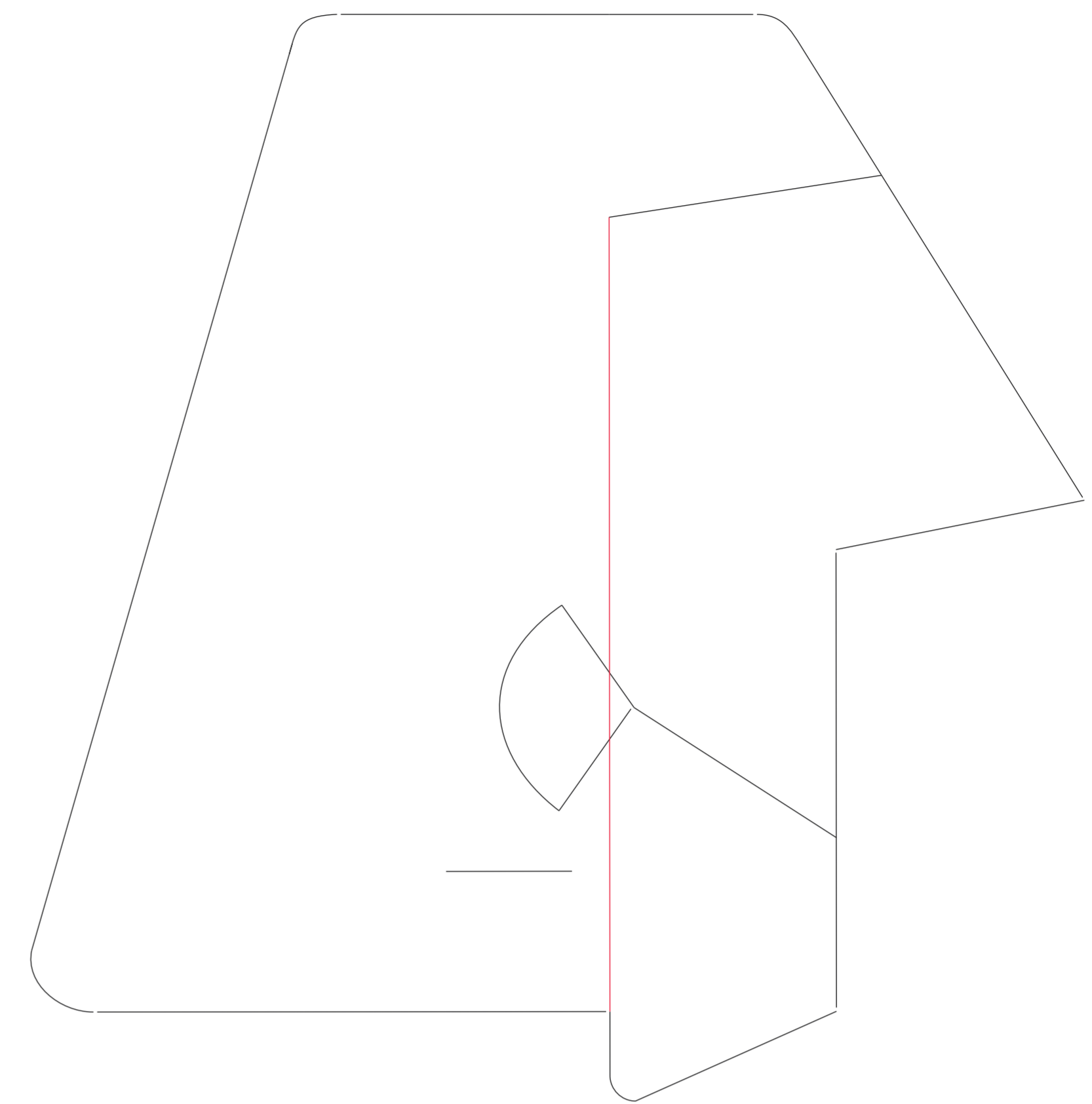
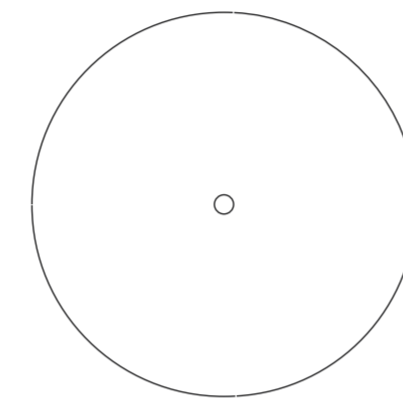
blue = lightly crease

green ⊗ = cut small reference hole for VG placement on opposite side of wing

wing spar (x2)



wheels (x6)



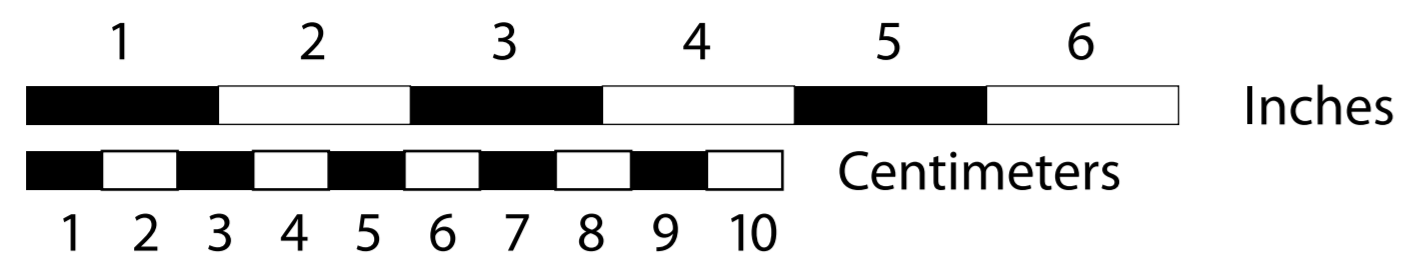
Recommended electronics:  
Park 400, 810 kv minimum  
18-30 amp  
1300 - 1800 mAh 3s  
(4) 9 gram servos

Throws:  
10° deflection (elevator/rudder/aileron)  
Expo 25%  
(For smooth cruising and pattern flying.  
Adjust to desired performance)

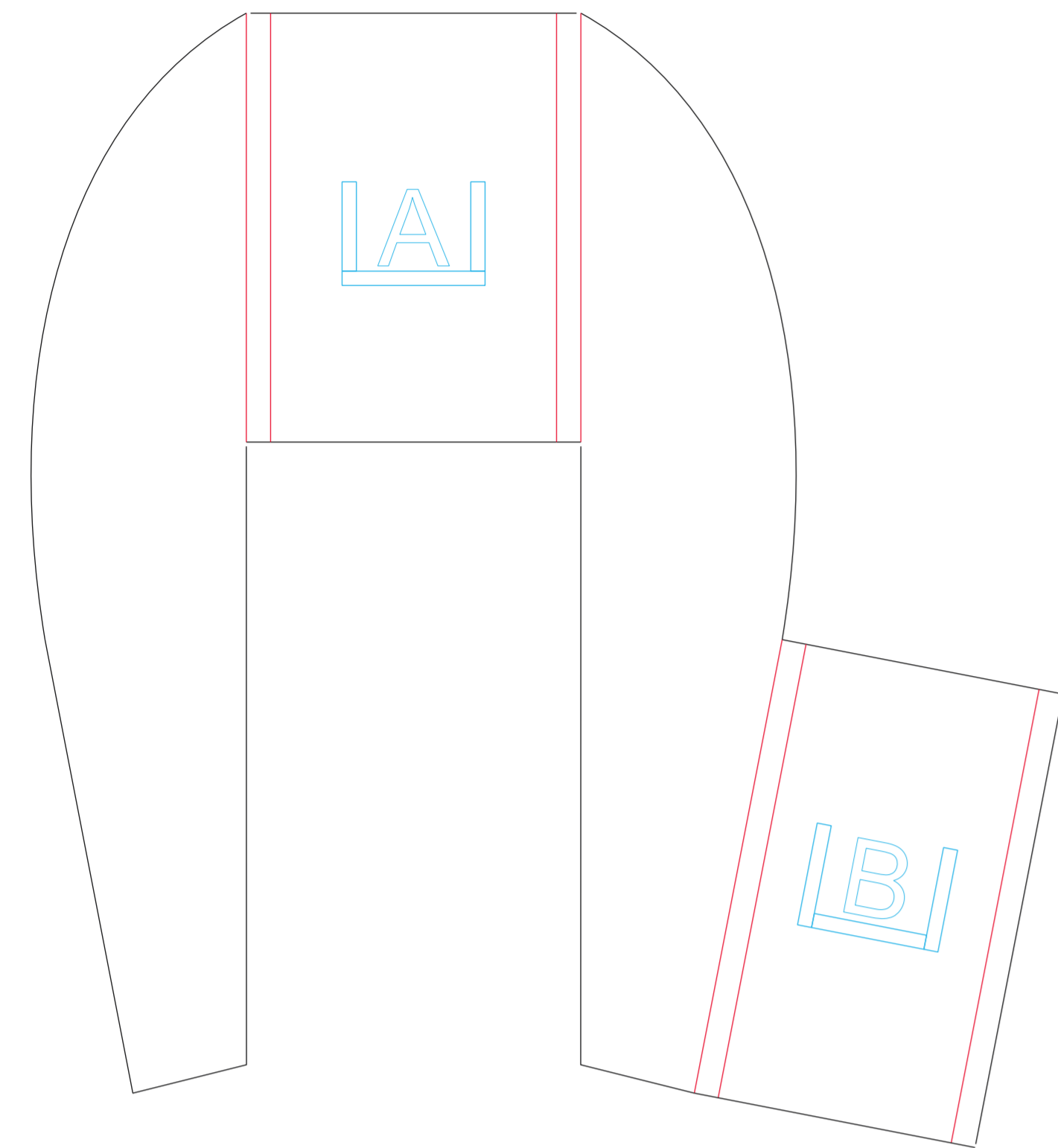
Weight Without Battery  
15.4 oz (439 g)

Recommended Prop:  
10 x 4.7 prop

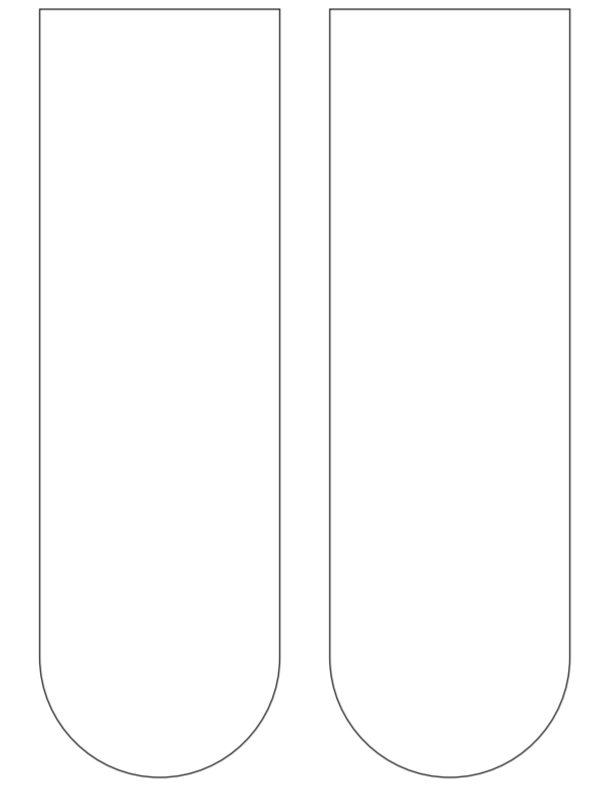
# FT 3D



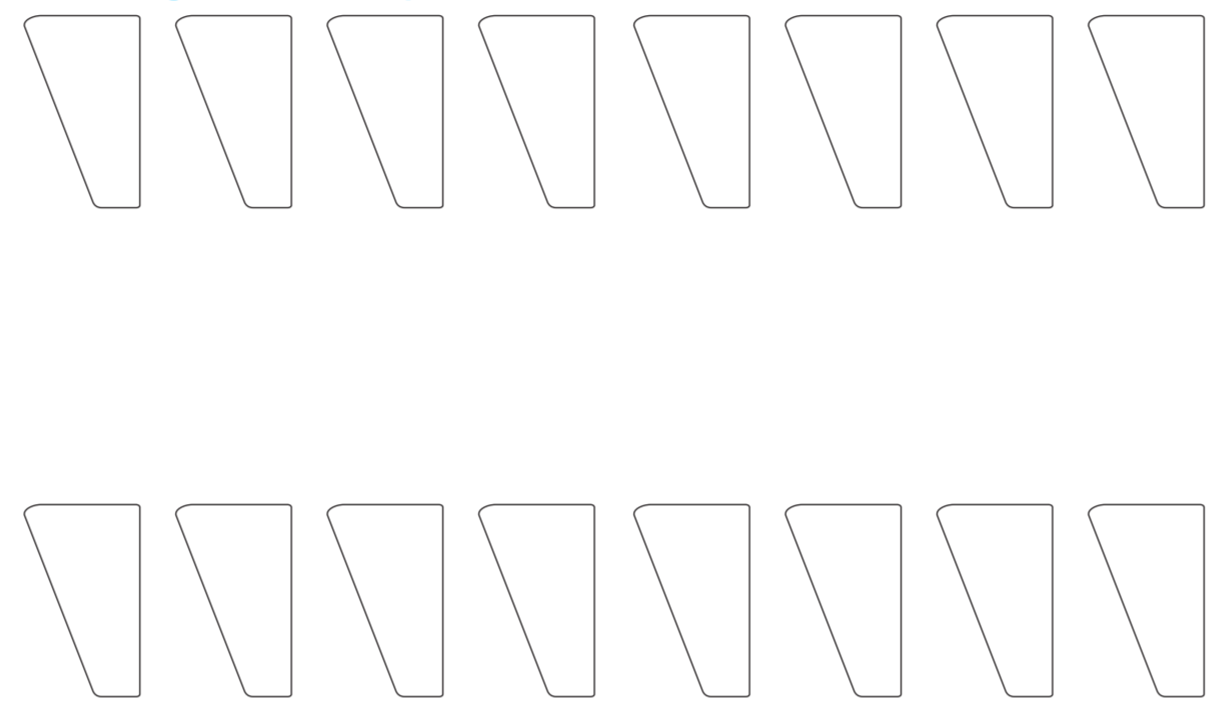
black = cut  
red = score 50%  
blue = lightly crease  
green = cut small reference hole for VG placement on opposite side of wing



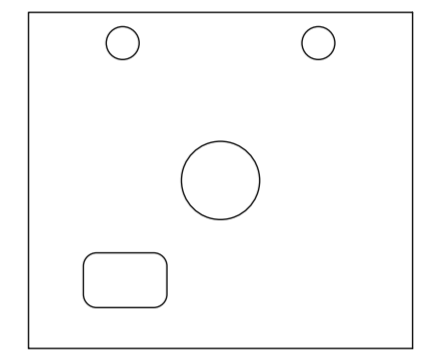
wing plates (poster board)



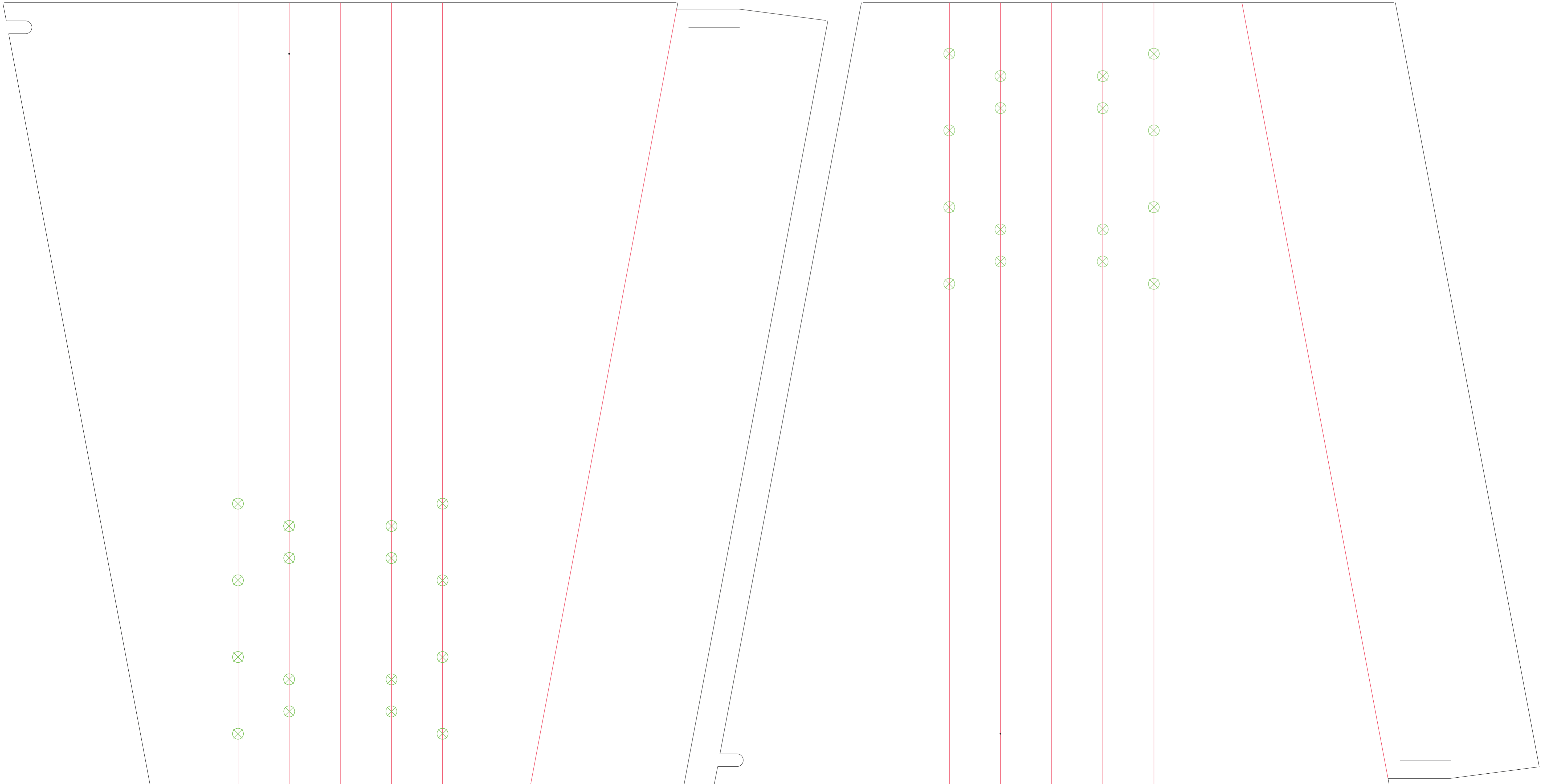
vortex generators (poster board)



canopy hatch (poster board)



Firewall  
2" X 1 3/4" Inch  
(50mm X 45mm)  
1/16" Inch thick  
(1.5mm)  
Hobby Plywood



Total Wingspan - 33" (838 mm)