



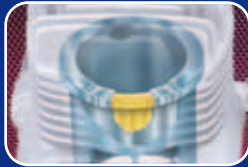
*"The First Choice for Quality,
Dependability and Performance."*

ENGINES

If you liked the .46 FX...

.46 AX

ABL™ TECHNOLOGY!



ABL (Advanced Bimetallic Liner) uses two O.S.-developed alloys to provide a durable barrier between the brass liner and piston.



OSMG0547

...you're gonna love the .46 AX

As the replacement for the high-performance .46 FX, it's no wonder that the .46 AX shares many of its features. The raw power. A remote needle valve. Mounting bolt patterns. A balanced "D"-cut crankshaft supported by dual bearings. CNC-machining for the piston and other parts. And the same exclusive ABL cylinder liner that has made FX reliability a byword.

But all the same, the .46 AX is a different — and better — engine. Why? Because times change and technology advances. And because O.S. uses the best of both to make a good engine a *better* engine.

- **Features the .46 FX's durable ABL (Advanced Bimetallic Liner) plating, as well as a new design that automatically centers, levels and seats the head during re-replacement. Head snugs down with only four screws — not six.**
- **Subtly tapered low-end needle eliminates surging at transition, ensuring exceptionally smooth, consistent throttle control from idle to top speed.**
- **Redesigned liner ports and a ball-milled inlet port minimize turbulence during fuel/air mixing, making combustion and power output more predictable.**
- **New high-speed needle bracket simplifies horizontal/vertical mounting — and can be replaced in just minutes.**
- **Minimizes vibration-induced "creep" and re-sets with a ratchet spring on the high-speed needle and O-ring seals on both needles. A simple rotor guide screw replaces the throttle stop screw — and eliminates spring-related movement.**
- **Includes a new low-noise E-3010 muffler and 2-year warranty protection.**
- **Includes a lock nut and longer crankshaft with more thread length, for better prop nut engagement and greater pilot safety.**



Switching the needle from a horizontal to a vertical orientation requires only a couple of minutes. A composite needle housing insulates the brass sleeve and prevents heat-related changes to needle settings.



A generously sized chamber and larger sound baffle significantly reduce exhaust noise. Rotating the exhaust port provides easy finish protection — adding an exhaust deflector provides even more.

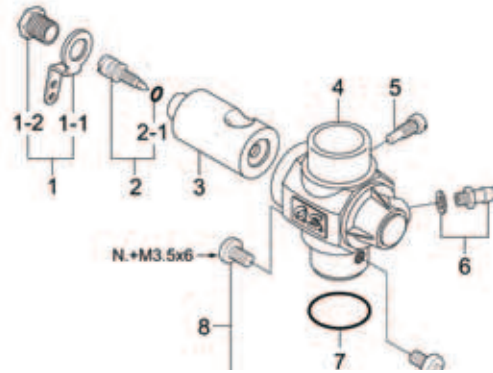
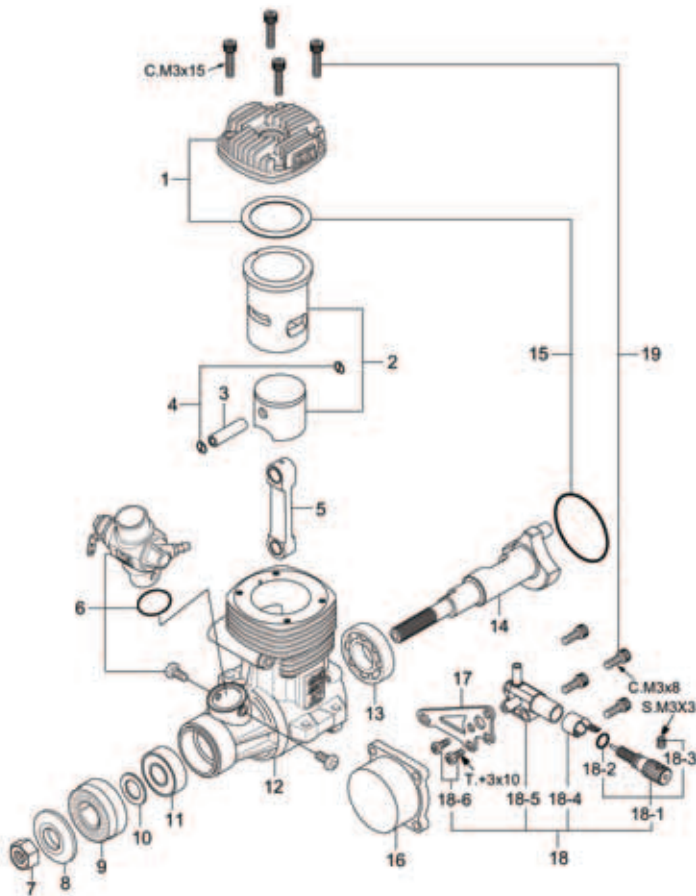
For more information on the .46 AX or the location of the hobby dealer nearest you, please visit www.osengines.com or call 1-800-682-8948 and mention code number 99E27.

www.osengines.com



.46 AX

Exploded View and Replacement Parts



ENGINE KEY

No.	Description	Stock No.
1.	CYLINDER HEAD	OSMG5017
2.	LINER/PISTON	OSMG4811
3.	PISTON PIN	OSMG7768
4.	PISTON PIN RETAINER	OSMG7642
5.	PSTN PIN RET RX,RZ,XM	OSMG3956
6.	40G COMPLETE CARB	OSMG2454
7.	PROP NUT	OSMG7944
8.	PROP WASHER	OSMG8024
9.	DRIVE WASHER	OSMG5482
10.	THRUST WASHER	OSMG9136
11.	FRONT BEARING	OSMG3062
12.	CRANKCASE	OSMG4210
13.	REAR BEARING	OSMG3089
14.	CRANKSHAFT	OSMG4463
15.	GASKET SET	OSMG6020
16.	COVER PLATE	OSMG4064
17.	NEEDLE MOUNT 40G	OSMG7153
18.	NEEDLE VALVE ASSEMBLY 40G	OSMG6980
18-1.	NEEDLE ASSEMBLY	OSMG7025
18-2.	"O" RING (2)	OSMG7388
18-3.	SET SCREW	OSMG8852
18-4.	RATCHET SPRING	OSMG8172
18-5.	NEEDLE VALVE 40G	OSMG7168
18-6.	NEEDLE ASSEMBLY SCREW	OSMG8620
19.	SCREW SET	OSMG8743
-	#A3 GLOW PLUG	OSMG2690
-	E-3010 MUFFLER	OSMG2870
-	PRESSURE FITTING #7	OSMG8743
-	MUFFLER ASSEMBLY SCREW	OSMG6915
-	MUFFLER SCREWS #873	OSMG6914

TYPE 40G CARBURETOR & EXPLODED PARTS VIEW

No.	Description	Stock No.
1.	THROTTLE LEVER ASSEMBLY	OSMG8999
1-1.	THROTTLE LEVER	OSMG9004
1-2.	THROTTLE LEVER SCREW	OSMG9080
2.	MIXTURE CONTROL VALVE	OSMG6761
2-1.	O-RING	OSMG7392
3.	CARB ROTOR	OSMG3670
4.	CARB BODY	OSMG3417
5.	ROTOR GUIDE SCREW	OSMG6002
3.	THRLE STOPSCR #20A/B	OSMG9090
4.	CARB BODY W/INS RING	OSMG3420
5.	SLIDE VALVE	OSMG8492
6.	FUEL INLET #1	OSMG6000
7.	CARB GASKET	OSMG6428
8.	CARB RETAINING SCREW	OSMG3840

Genuine O.S.® Option Parts

No.	Description	Stock No.
-	SPINNER NUT	OSMG2925
-	#873S SUPER SILENCER	OSMG2958
-	MUFFLER ASSY SCREW #873	OSMG6915
-	MUFFLER EXTENSION #873	OSMG2578
-	LOCK WASHER	OSMG9402
-	SOCKET WRENCH	OSMR2976
-	BUBBLELESS TANK WEIGHT	OSMG5870
-	GLOW PLUG #A5	OSMG2693
-	GLOW PLUG #8 STD LONG	OSMG2691
-	ENGINE MOUNT 40-46	OSMG2774
-	NEEDLE EXTENSION CABLE	OSMG7290
-	FUEL PICK-UP FILTER - LARGE	OSMG5872

www.osengines.com